

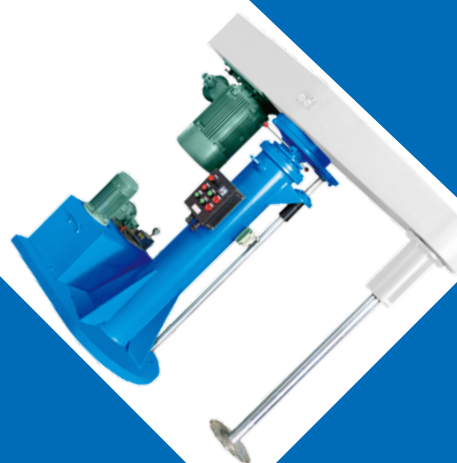


坐标机械

LEADMARK MACHINERY

PROFESIONNAL

CHEMICAL MACHINERY SOLUTIONS



广东坐标化工机械有限公司

Guangdong Leadmark Chemical Machinery Co., Ltd

PARTNERS

合作企业共同见证

(以下有部分合作伙伴 排名不分先后)



中海油常州涂料化工研究院

YONGXIN永新

西北永新化工股份



天龙油墨



翔川油墨

SAKATA INX
Visual Communication Technology

阪田油墨



巨石集团

SIEMENS

西门子



海力普变频器



PPG 涂料



立邦涂料



中华制漆



金鱼涂料



宁波飞轮造漆



牡丹油墨



科斯伍德油墨



DIC 油墨



锦达涂层



ABB



锡安达电机



NSK 轴承



南京长江涂料



佐敦涂料



美涂士化工



东洋油墨



洋紫荆油墨



杭华油墨



阿基里斯人造皮



安利合成革



力宝集团



SKF 轴承



SEW 减速机



宝钢不锈钢



紫荆花制漆

COMPANY

公司简介

广东坐标化工机械有限公司是一家专业从事化工机械及成套非标化工设备的企业，行业经验 15 年，集设计研发生产销售贸易为一体的集团企业。我司注册资本 1000 万，致力于打造行业标杆企业。

公司主要经营：砂磨机、分散机、搅拌机、反应釜、压盖机、过滤器。其中畅销产品为：纳米砂磨机、卧式砂磨机、高速分散机、低速搅拌机、调漆釜、反应釜、真空分散机、乳化机、真石漆机、挤出机、不锈钢拉缸、锆珠、分散盘等产品。

公司拥有专业的研发设计团队，强大的技术支持，专业的生产团队，良好的售后服务，灵活的定制方案，能够满足客户各种标准及非标的设备采购需求。

公司本着用户至上、以质取胜、服务周到的经营宗旨，致力于为国内外客户提供完整的专业的化工成套设备解决方案。

Guangdong Leadmark Chemical Machinery Co., LTD. is a group enterprise. We specialized in chemical machinery and complete set of standard&non-standard chemical equipment, with 15 years of industry experience. We integrate design, development, production, sales and trade together. We committed to building industry landmark enterprise.

Our Main business scope: bead mill, dispersion machine, mixer, reactor, filling machine, filter. It includes nano bead mill, horizontal bead mill, high-speed disperser, low speed mixer, paint mixing tank, reactors, vacuum dispersion machine, emulsifying machine, stone paint making machine, extruder, stainless steel cylinder, zirconium bead, and other chemical machines' accessories.

Our company has a professional R&D design team, strong technical support, professional production team, good after-sales service, flexible customized solutions, to meet your various standards and non-standard equipment procurement needs.

We committed to providing the complete and professional chemical equipment solutions. You can choose individual machine or full production line.



加入我们!
Join us!



CDS-20/30/50/60

亚微米级专用
SUBMICRON-LEVEL DEDICATED

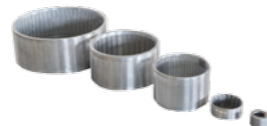


紧凑布局 占地更少



CDS-100

可选各种规格离心轮



可选各种规格筛网



可选各种材质盘片

小研磨腔大流量研磨 HIGHER PRODUCTIVITY FROM SMALLER PROCESS CHAMBER

● 全新机型 CDS 大流量砂磨机采用新研发功能部件为您提供更经济的湿法研磨工艺和技术，高效率研磨盘片和超大离心轮及筛网使研磨珠子能更好的分布在研磨腔，利用离心动态分离式筛网提高流量，研磨珠能安全的分离，甚至在高流量时高效率的分离系统发挥作用，包含下列单元：1、离心轮及筛网和整合的盘片；2、特殊之超大筛网。

● The new full-volume Dynamic-Centrifugal-Cartridge-System offers optimized energy saving wet milling technology by con-sequent combination of a multitude of newly developed and ideally matching functional elements. High efficiency grinding discs with a large-surface slotted sieve to get the better beads distributed in the mill chamber. Enhanced flow rate capability by centrifugal implement screen. Operationally safe separation of grinding beads even with particularly high flow rates due to the highly efficient separator system, consisting of 1. Deflector cage with integrate grinding disc; 2. Large-surface slotted sieve.

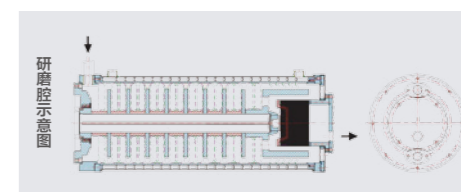
机器的概念和特点 CONCEPT AND MAIN FEATURES

- 排除腔体内无效径向力；
- 可更换各种材质的内腔体；
- 可更换前后端盖和易磨损备件为耐磨损材质；
- 特殊盘片和轴心设计；
- 离心动态分离式筛网。
- Elimination of all radial openings in the mill chamber;
- Allowing for installation of exchangeable, through-hardened inner liner;
- Exchangeable, through-hardened front & end plates and hardened wear bushings at exposed locations;
- Combination of neutral and conveying high intensity agitator discs. specific design featuring increased diameter;
- Bead retention by centrifugal implement screen.



CDS 大流量砂磨机优点 CDS LARGE FLOW RATE GRINDING MILL ADVANTAGE

- 介于高能量密度和传统砂磨机之间的高效率研磨设备；
- 通常使用单次研磨工艺；
- 特殊的研磨珠保持设计；
- 特殊之超大筛网清洗设计；
- 适用于高磨损产品；
- 研磨分散大批量涂料；
- 利用离心动态分离式筛网提高流量；
- 容易更换产品接触部之备件。
- Closing gap between high enery density mills and convention mills;
- Usually singal pass process;
- Unique media retention device;
- Unique cleaning feature of large surface screen;
- Advantageous grinding of abrasive products such as marine pains, antifouling, heavy duty protective coatings;
- Dispersing grinding of bulk paint (primer, filler);
- Enhanced flow rate capability by centrifugal implement screen;
- Easy to exchange product contact parts.

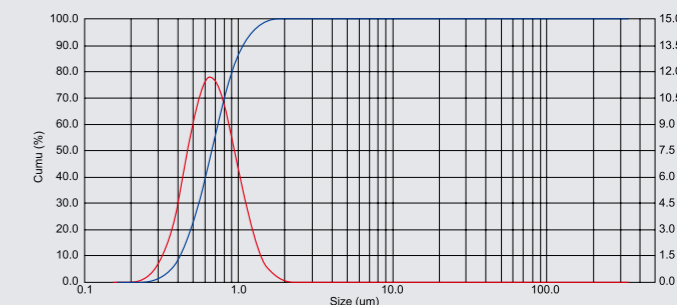


技术参数 TECHNICAL PARAMETERS

型号 Type	CDS-2	CDS-5	CDS-20	CDS-30	CDS-50/60	CDS-100	CDS-300	CDS-500	CDS-1000
主机功率 Main motor power (kw)	3-4	5.5-7.5	18.5-22	22-30	37-45	55-75	90-132	160-200	315-355
研磨腔容积 Vessel capacity (L)	2	5	20	30	50/60	100	300	500	1000
产品最高流量 Maximun flow rate (L/h)	50-20	10-100	50-250	100-500	200-1000	250-2500	>2000	>3000	>5000

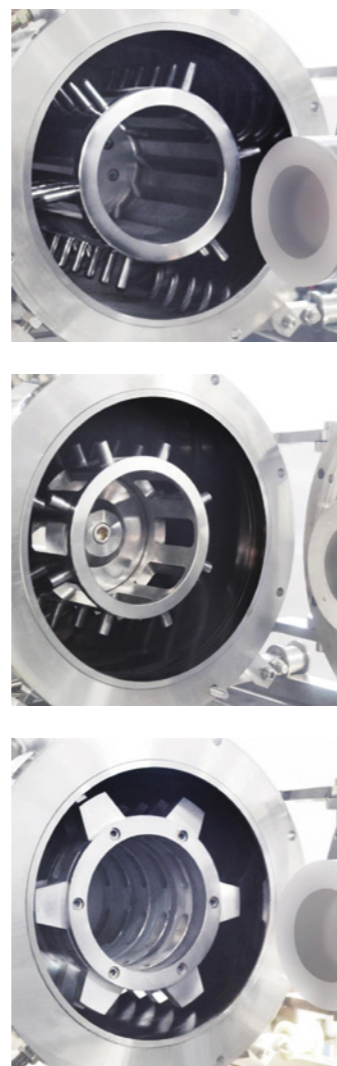
- 研磨珠粒径可选用 0.2mm~1.0mm，研磨物料至亚微米甚至纳米级别变得轻松自如。保守估算同等条件下研磨效率至少是传统砂磨机的 2 倍以上。
- We can choose the grinding beads of diameter 0.2mm~1.0mm to grind materials, and it easily make materials' finess achieved submicron even nanometer. On a conservativ e estimate and a equal conditions, the grinding efficiency is at least 2 times more than the traditional sand mill's.

钛白粉粒度分布





CDP-30



优势表现 PERFORMANCE ADVANTAGE

- 全新设计的静态离心分离装置，流量大，出料顺畅；
- 可以使用 0.1mm 以上的研磨介质；
- 以黄金分割比为标准的转子与筒体布置方式，可以有效降低磨损，增大能量利用率，达成最佳的使用效果；
- 更加优化的整机设计，设备整体稳定性更可靠；
- 高精密加工的零部件，精湛的装配工艺，保证了设备运行的稳定性；
- 材质：根据不同产品，可以选择碳化硅、氮化硅、氧化锆、聚氨酯、硬质合金等材料；
- 多重冷却模式，可以有效的降低研磨产生的热量。
- The new design of the static centrifugal separation device with large flow and material flow smoothly;
- Could use the grinding media above 0.1mm;
- Using the rotor and cylinder arrangement with standards of golden section ratio, it can effectively reduce wear and tear, increase energy efficiency, and achieve the best use effect;
- More optimized design of the whole machine to make more reliable of the overall stability of the equipment;
- Ensure the stability of equipment operation with parts of high precision machining and exquisite assembly process;
- Material quality: according to different products, you can choose silicon carbide, silicon nitride, zirconium oxide, polyurethane, hard alloy and other materials;
- Multiple cooling mode, can effectively reduce the heat produced by grinding.

CDP-60 / 90 / 150 / 300



技术参数 TECHNICAL PARAMETERS

型号 Type	CDP-6	CDP-10	CDP-30	CDP-60	CDP-90	CDP-150	CDP-300
研磨腔容积 Vessel capacity (L)	6	10	30	60	90	150	300
主机功率 Main motor power (kw)	15	22	45	75-90	110-132	160-185	250-315
研磨介质 Grinding media (mm)	0.2-2	0.2-2	0.2-2	0.2-2	0.2-2	0.2-2	0.2-2
整机重量 Weight (kg)	600	750	1500	3000	4000	6000	7500

● CDP 系列纳米砂磨机采纳欧洲先进设计标准，流量大，控温能力好，能量转化率高，达成纳米级研磨时粒度分布范围窄。

● CDP 系列纳米砂磨机广泛应用在陶瓷、墨水、喷墨、色彩过滤器的分离剂、功能性陶瓷、锂电池材料、热敏纸、电子抛光液、纳米色浆、农药等纳米研磨领域。

● CDP series adopted advanced European design standards with ample flow, good temperature controlling ability and energy transformation ratio to achieve the narrow degree of grain size distribution range of nanometer grade.

● CDP series have widely used in ceramics, ink, color filter separating agent, functional ceramic, lithium battery materials, thermal paper, electronic slurry, nano paste, pesticides and other fields of nano grinding.

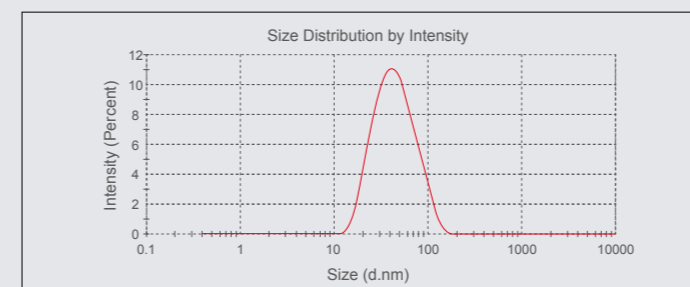
工艺特性 PROCESS CHARACTERISTICS

● 采用循环研磨工艺，环保节能、劳动强度小。配制好的原始浆料，经过第一遍粗略研磨后，泵入循环搅拌罐，经底部泵输送送入纳米机；一边经过研磨后进入循环罐，与未曾研磨过的物料通过搅拌机快速混乱，一边又通过底部泵入砂磨机，周而复始直到达成研磨要求。一般而言，罐的容积是砂磨机流量的 1/4。

● With the circular grinding process, environmental protection, energy saving, and small labor intensity, after the original slurry preparation and first rough grinding, pump into the circle mixing tank and delivery into the nano grinding machine through the bottom pump. Make rapid mixer chaos with no grinding materials into the circulation tank at the same time deliver into it after grinding and into the sand mill through the bottom pump. Come full circle until it reached the requirement of grinding. Generally speaking, the volume of the tank is 1/4 of the sand mill flow.

Z-Average (d.nm): 38.92
Pdl: 0.219
Intercept: 0.951
Result quality Good

Size (d.nm) % Intensity: St Dev (d.nm...
Peak 1: 47.70 98.4 23.88
Peak 2: 4548 1.6 855.3
Peak 3: 0.000 0.0 0.000





产品特点 PRODUCT FEATURES

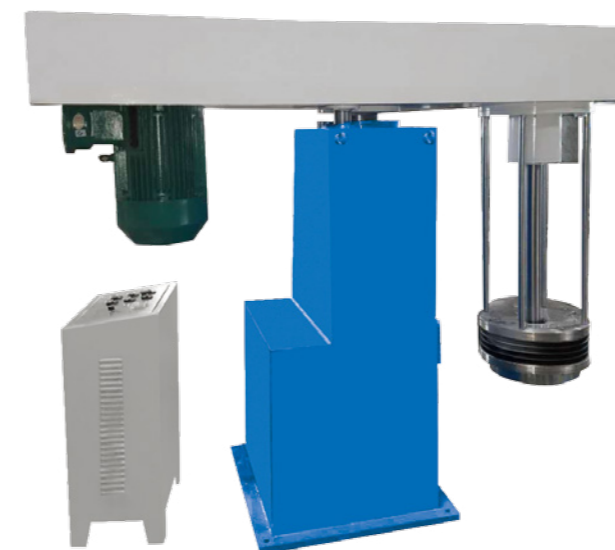


- 提高生产产能，降低生产能耗；
- 解决 20 μm-50nm 细度问题；
- 解决不变色无金属污染的纯度问题；
- 解决同比研磨低能耗高产出问题；
- 解决堵分离器漏密封液停机问题；
- 解决频繁更换核心配件使用稳定及寿命问题；
- 解决及时专业的服务问题。
- Improve production capacity and reduce energy consumption;
- Solve the problem of 20 μm-50nm fineness;
- Solve the problem of purity of non-metallic pollution;
- Solve the problem of low energy consumption and high energy consumption;
- Solve the problem of leakage sealing fluid of the plugging separator;
- Resolve frequent change of core parts to use stability and longevity;
- Solve the problem of timely professional service.

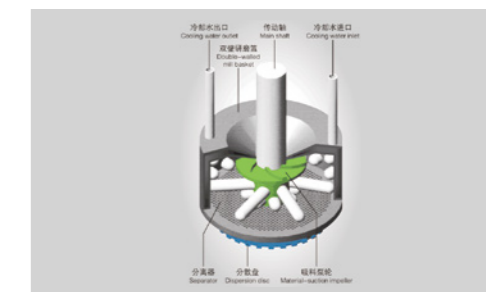


技术参数 TECHNICAL PARAMETERS

机型 / 尺寸 Model/size		HSM15A	HSM5A	HSM20A	HSM30A	HSM40A	HSM50A	HSM60A
外形尺寸 Overall dimension (mm)	A (mm)	1000	1500	1700	1980	2200	2200	2200
	D (mm)	830	830	950	950	1220	1220	1220
	E (mm)	1450	1450	1600	1600	1700	1700	1750
筒体容积 Simplified volume (L)		5	15	20	30	40	50	60
主电机功率 Main motor power (kw)		5.5	15	18.5	22		30	
分散轴转速 Dispersion axis speed (r/min)		1200	1230~1530	1160~1350	1000~1300	890~1160	800~1100	800~1100
分散盘数量 (个) Number of scattered disks (one)		6	8	9	11	13	13	13
泵送量 Pumping capacity (L/min)		0~17			0~40			
介质装填量 Medium load (L)		3~4.25	6.5~12.75	10~17	15~25.5	20~34	25~42.5	30~51
物料进出管径 Material in and out of pipe diameter		G¾	G1"			G1"		
冷却水进出口管径 Cooling water inlet and inlet pipe diameter		G¾						
物料粘度 Material viscosity (Pa. S)		≤ 10						
冷却水消耗量 (m³/h) Cooling water consumption (m cubed/h)		1.5				2		
泵供送压力 Pump supply pressure (MPa)		0.5~0.7						
泵最大空气消耗量 (m³/min) Pump maximum air consumption (m cubed/min)		1.68						
生产能力 Production capacity (kg/h)		15~200	30~300	50~400	50~600	70~700	100~1000	150~1300



- 本机是一种集研分散功能于一体的新型化工设备。能源消耗低，生产效率高，操作简单，易维护，易清洗，换色方便。适用于独立式搅拌桶操作和高、低粘度的混浆。
- This machine combines both milling and dispersing function. New design with energy saving, high efficiency, easy operation, easy maintenance, cleaning and changing color. Applicable for independent tank operation and high / low viscosity paste.



技术参数 TECHNICAL PARAMETERS

规格 Type	LS-3	LS-10	LS-20	LS-40
混浆容量 Paste capacity (L)	2~3	100~150	200~500	400~1000
主电机功率 Main motor power (kw)	0.75	11	22	30~37
主轴转速 Main shaft speed (r/min)	0~3000	0~800	0~600	0~500
升降行程 Range of up and down (mm)	260	800	900	1050
油泵电机功率 Oil pump power (kw)	-	0.75	1.1	1.5
重量 Weight (kg)	80	1500	2500	2800
外形尺寸 Overall dimension (L 长 x W 宽 x H 高) (mm)	350x250x700	1860x710x1730	2145x860x1955	2600x920x2100



● 本产品是对两种或多液体和粉体状物料进行搅拌、溶解和分散的高效设备，不但能单独使用，也可以与各种型号砂磨机配套使用。适用于油漆、油墨、涂料、染料、造纸等化工行业，对固液相物料进行湿法分散、混合。使用变频调速，液压升降，生产连续性强，分散效果好，使用和维护简单方便。

● It can mix, dissolve and disperse two or more kinds of liquid and powder material. It can both work single and together with some other sand grinder. Suitable for producing paint, ink, coating, dyestuff, paper making and so on in chemical industry. the mixers are used for wet dispersing and mixing liquid-solid material. Non-grade speed adjustment by frequency converters, hydraulic elevating, working steadily, use and maintenance expediently.



技术参数 TECHNICAL PARAMETERS

规格 Type	FL1.5 ModelA	FL4 ModelA	FLJ5.5-7.5 (FL11) ModelA	FL22 (FL30) ModelA&B	FL37 ModelA&B	FL45-75 ModelA&B	FL90-200 ModelB
电机功率 Motor power (kw)	1.5	4	5.5-7.5 (11)	22 (30)	3.7	45-75	90-200
分散轴转速 Speed (r/min)	0-1450	0-1450	0-1450	0-1450	0-1200	0-1200	0-1000
分散轮直径 Diameter (mm)	150	200	250	350	400	450	600
升降行程 Lift (mm)	800	800	900	1200	1200-1500	1500-2000	1800-2800
泵功率 Pump power (kw)	0.55	0.55	0.75	1.5	1.5	2.2	3
罐容量 Capacity (L)	50	200	400-600	600-1000	1000-2000	1000-2500	5000-8000
重量 Weight (kg)	360	400	800	1500	1700	2100	2600-3000
外形尺寸 Overall dimension (mm)	A	1260	1260	1770	2140	2740	2700
	B	1340	1300	1700	2260	2260	3000
	C	600	600	900	1100	1100	1600
	Wide	460	580	800	800	800	1000



● 用于多气泡物料和易挥发性溶剂较多的工艺中，通过抽真空使物料在真空中的容器内分散，减少气泡和溶剂的挥发，通过真空状态的分散可以加速物料的分散细度，使物料迅速脱泡。结构简单、真空度高、操作方便、适用度广。

● It is used in craftwork with honeycombed material and fugitive solvent. Through creation of vacuum, the material is dispersed in the vacuum container to reduce the bubble and solvent volatilization. The vacuum condition dispersion accelerates the dispersion of material fineness to make the material deaerating quickly. It has simple structure, high degree of vacuum, convenient operation and the wide range of application.



技术参数 TECHNICAL PARAMETERS

规格 Type	FL200	FL400	FL600	FL1000
电机功率 Motor power (kw)	7.5	15	22	30
转速 Speed (r/min)	0-1500	0-1500	0-1500	0-1500
料桶容积 Capacity (L)	200	400	600	1000
机架升降高度 Lift (mm)	900	1000	1200	1200
真空度 Vacuum (mpa)	≤ -0.07	≤ -0.07	≤ -0.07	≤ -0.07
散盘直径 Disc size (mm)	200	250	330	380



- 本机是一种新型高效搅拌设备，适用于高粘度物料的搅拌，可使物料迅速分散、溶解、混和均匀，广泛应用于胶印油墨、原子灰、胶粘剂等有关化工产品的生产。可根据客户要求制成真空式。
- High efficiency mixing equipment applicable for high viscosity, to make material dispersing, dissolve and mixing uniform. It is widely used in production of concerned chemical products such as ink for offset printing, unsaturated polyester putty, adhesive etc.



- 本机是一种新型高效搅拌设备，适用于高粘度物料的搅拌，可使物料迅速分散、溶解、混和均匀，广泛应用于胶印油墨、原子灰、胶粘剂等有关化工产品的生产。可根据客户要求制成真空式。
- High efficiency mixing equipment applicable for high viscosity, to make material dispersing, dissolve and mixing uniform. It is widely used in production of concerned chemical products such as ink for offset printing, unsaturated polyester putty, adhesive etc.



技术参数 TECHNICAL PARAMETERS

规格 Type	SJ-600	SJ-900	SJ-1000	SJ-1200	SJ-1300
搅拌缸容积 Tank capacity (L)	150	500	600	1000	1200
高速电机功率 High speed motor power (kw)	11	22	22	30	37
低速电机功率 Low speed motor power (kw)	7.5	22	22	22	24/34
高速叶片直径 Diameter of high speed dispersing disc (mm)	200	250	280	300	300
低速搅拌器直径 Diameter of low speed mixing blade (mm)	570	860	960	1160	1260
高速轴转速 Speed of high shaft (r/min)	1470	1470	1470	1470	1470
低速轴转速 Speed of low shaft (r/min)	120-60	120-60	120-60	120-60	120-60
最大升降行程 Max.range of up and down (mm)	700	950	1000	1100	1100
往复升降行程 Range of up and down (mm)	200	250	300	450	450
外形尺寸 Overall dimension LxWxH (mm)	1670x1250x2570	2950x1400x3600	2950x1500x3600	2800x1600x3120	2800x1600x3120

技术参数 TECHNICAL PARAMETERS

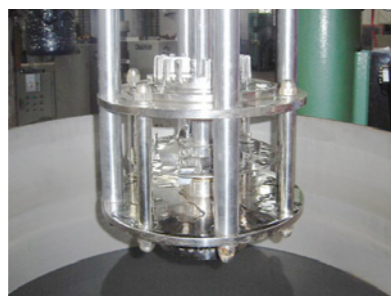
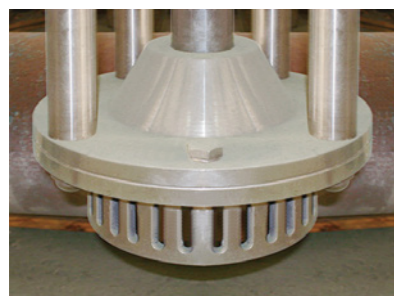
规格 Type	SJ-600	SJ-900	SJ-1000	SJ-1200	SJ-1300
搅拌缸容积 Tank capacity (L)	150	500	600	1000	1200
高速电机功率 High speed motor power (kw)	11	22	22	30	37
低速电机功率 Low speed motor power (kw)	7.5	22	22	22	24/34
高速叶片直径 Diameter of high speed dispersing disc (mm)	200	250	280	300	300
低速搅拌器直径 Diameter of low speed mixing blade (mm)	570	860	960	1160	1260
高速轴转速 Speed of high shaft (r/min)	1470	1470	1470	1470	1470
低速轴转速 Speed of low shaft (r/min)	120-60	120-60	120-60	120-60	120-60
最大升降行程 Max.range of up and down (mm)	700	950	1000	1100	1100
往复升降行程 Range of up and down (mm)	200	250	300	450	450
外形尺寸 Overall dimension LxWxH (mm)	1670x1250x2570	2950x1400x3600	2950x1500x3600	2800x1600x3120	2800x1600x3120



- 适用于涂料、油墨，农药、造纸等行业物料的乳化、混合、分散使用物料的细度分布均匀，通过强力的高速剪切比功能，在短时间内使产品达到要求。
- Applicable for coating, ink, pesticide, paper industry emulcification, mixing and dispersing to get uniform material. Good quality is available via powerful high speed shearing in short time.



- 本产品是对两种或多种液体和粉体状物料进行搅拌、溶解和分散的高效设备，不但能单独使用，也可以与各种型号砂磨机配套使用。适用于油漆、油墨、涂料、染料、造纸等行业，对固液相物料进行湿法分散、混合。使用变频调速，液压升降，生产连续性强，分散效果好，使用和维护简单方便。
- This product is an efficient equipment for mixing, dissolving and dispersing two or more liquids and powders. It can be used alone or with various types of sand mill. Applicable to paint, ink, paint, dye, papermaking and other industries, the solid liquid material wet method dispersion, mixing. Using variable frequency speed regulation, hydraulic lift, production continuity, good dispersion effect, easy to use and maintenance.



技术参数 TECHNICAL PARAMETERS

规格 Type	GJD-4	GJD-7.5	GJD-11	GJD-22
主电机功率 Main motor power (kw)	4	7.5-11	11	22
主轴转速 Speed of mainshaft (r/min)	2000	2000	2000	1800
罐体容量 Tank capacity (L)	<150	<300	<450	<1000
分散盘直径 Diameter of dispersing disc (mm)	150	200	250	300
剪切盘直径 Diameter of shearing plate (mm)	100	150	200	250
升降高度 Elevating height (mm)	600	900	900	1200
电机高速模式 Motor high speed mode	电磁调速 / 变频调速 Electromagnetic speed adjustable/Frequency conversion speed adjustable			
电机工作环境 Motor working environment	防爆 / 普通 Explosive proof/Common			

技术参数 TECHNICAL PARAMETERS

规格 Type	FL75	FL90	FL110	FL160	FL200
电机功率 Motor power (kw)	75	90	110	160	200
分散轴转速 Dispersing spindle speed (r/min)	0-1200	0-1000	0-1000	0-1000	0-1000
分散轮直径 Dispersion wheel diameter (mm)	450	600	600	600	600
升降行程 Movements itinerary (mm)	1500	1800	2200	2500	2800
泵功率 Pump power (kw)	2.2	3	3	3	3
罐适用容量 Tank capacity (L)	2500	5000	6000	7000	8000
重量 Weight (kw)	2100	2600	2800	3000	3000
外形尺寸 Overall dimension (mm)	A	2600	2700	2700	2700
	B	2800	3000	3000	3000
	C	1200	1600	1600	1600
	Wide	1000	1000	1000	1000



- 适用于涂料、染料、颜料、造纸、胶粘剂等化工行业对液体及液固相物料进行搅拌、溶解和分散；
- 特点：搅拌、分散时空气吸留极少，混合与调匀效果俱佳，用中或高速搅拌，分散可使物料迅速溶解，颗粒变小。
- Suitable for mixing, dissolving and dispersing liquid to liquid and particulate wetting in an enclosed vessel. Minimum solvent loss, and fast powder intake results in high quality dispersions;
- Excellent for coatings, dyes, pigments, paper, adhesives and chemicals. Low volume air intake at the cortex results in evenly dispersed products.



- 适用于涂料行业的色漆配色混合，以及其他行业的液→液，液→固物料的混合；
- 调色均匀，混合，混溶性好，结构合理，有强力搅拌的功能。
- Suitable for both colour matching and mixing of paints and pigmented bases and the blending of liquid-liquid, liquid-solid phase materials in other mixing industries;
- Colour matching is completed quickly by the action of the blending mechanism, The machine is robustly fabricated and is easily installed.



技术参数 TECHNICAL PARAMETERS

规格 Type	FF0.5M³	FF1M³	FF2M³	FF3M³	FF4M³	FF5M³	FF6M³	FF10M³	
电机功率 Motor power (kw)	11	15	30	37	45	55	75	110	
分散轴转速 Speed (r/min)	0~1450	0~1450	0~1450	0~1450	0~1450	0~1450	0~1450	0~1000	
料缸容积 Chamber (m³)	0.5	1	2	3	4	5	6	10	
调速形式 Speed controlled	电磁调速 / 变频调速 Buncher/liveter			变频调速 Inverter Control					
分散盘直径 Disc diameter (mm)	250	300	350	380	400	450	500	550	
外形尺寸 Overall dimension (mm)	D	800	1000	1450	1500	1600	1800	1900	2200
	H	1000	1250	1575	1880	2180	2235	2360	2820
	H1	850	1170	1380	1480	1570	1690	1740	1850

技术参数 TECHNICAL PARAMETERS

规格 Type	TC0.5M³	TC1M³	TC2M³	TC3M³	TC4M³	TC5M³	TC6M³	TC8M³	TC10M³
电机功率 Power (kw)	1.1	2.2	4	5	7.5	11	11	18.5	15
容积 Chamber (m³)	0.5	1	1	3	4	5	6	8	10
转速 Speed (rpm)	130	130	130	88	88	88	88	88	63
搅浆直径 Impeller (mm)	500	500	500	800	800	1200	1300	1250	1250
搅浆数量 Number	1	1	1	2	2	2	2	3	3
外形尺寸 Overall dimension (mm)	D	800	1000	1400	1600	1600	1800	1900	2200
	H	1060	1355	1575	1725	2025	2125	2300	3050
	H1	550	550	1210	1240	1290	1510	1510	1800



- 本机集低速强烈搅拌与高速分散多功能于一体，对中高粘度及触变性物料具有良好的适应性。运用于各种物料的搅拌、溶解分散和配色，尤其适用于批量乳胶漆生产。
- FS Multi-function reactor has functions of low speed stirring agitating and high speed dispersing, it has sure of suitability to medium and high viscosity material and rheopexy. The machine can be used to stir, dissolve, disperse and color matching. It is ideal for patch latex paints production.



技术参数 TECHNICAL PARAMETERS

规格 Type	FS-2M³	FS-3M³	FS-5M³	FS-6M³	FS-8M³	FS-10M³	FS-12M³
容积 Capacity (m³)	2	3	5	6	8	10	12
搅拌功率 Agitate power (kw)	5.5	5.5	7.5	7.5	11	15	18.5
搅拌转速 Agitate rotation speed (r/min)	50	50	50	50	41	41	41
搅拌器直径 Mixing agitate diameter (mm)	1300	1500	1700	1700	1900	2100	2300
分散转速 Dispersing speed (r/min)	960/1450	960/1450	960/1450	960/1450	870/1470	870/1470	750/1480
分散功率 Dispersing power (kw)	13/16	13/16	22/28	22/28	22/28	26/34	30/42
分散盘个数 Quantity of disperser disc	2	2	2	2	2	2	2
外形尺寸 Overall dimension (mm)	筒直径 D	1400	1600	1800	1800	2000	2400
	筒身高 H1	1650	1765	2048	2400	2800	3100
	筒总高 H2	1930	2000	2200	2200	2500	2620



- 坐标强力分散机的两高速分散机构和一个刮底刮底机构使物料在釜体内作复杂的运动，从而达到迅速分散研磨的效果。广泛应用于高粘度、膏体状物料的混炼、搅拌、硫化、分散、研磨、重新聚合等工艺过程。我司产品具有分散均匀、无死角、出料方便等优点。
- 坐标强力分散机主要适用于生产：硅酮密封胶、聚氨酯密封胶、机械密封胶、液体硅胶、RTV、电子胶、油墨、颜料、染料、电子浆料、树脂、塑料、牙膏、化妆品等行业。使用粘度范围 10,000cps~2,000,000cps 左右。
- Leadmark triple shaft mixers have 2 high speed dispersers & a scraper, the unique design will make the reactant fine dispersing. They are widely used in high viscosity, cream material mixing, vulcanization. dispersing milling polymerization processing. Our machine have no blind mixing spot & easily discharging.
- Leadmark triple shaft mixers are widely used in industries: silicone sealant, PU sealant, machinery sealant, liquid silicone, RTV, Electronic sealant, ink, pigment, dye, electronic paste, resin, plastic, tooth paste etc. Viscosity range from 10,000cps~2,000,000cps.

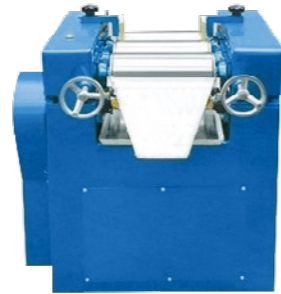


技术参数 TECHNICAL PARAMETERS

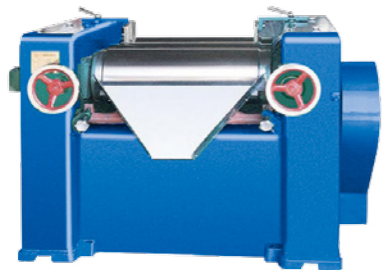
型号 Type	QLF-5	QLF-300	QLF-500	QLF-1000	QLF-2000	QLF-5000
缸体容积 Design volume (L)	5	300	500	1000	2000	5000
投料容积 Feeding volume (L)	3	180	300	600	1200	3000
电机功率 Motor power (kw)	1.5x3	11x3	15x3	30x3	37x3	55x3
搅拌转速 Mixing speed (RPM)	42	33	33	23	23	23
分散转速 Dispersing (RPM)	0-1500x2	0-1500x2	0-1500x2	0-980x2	0-980x2	0-980x2
真空度 Vacuum (mpa)	-0.098	-0.098	-0.098	-0.098	-0.098	-0.098



S65 三辊研磨机
S65 Three Rollers Grinder



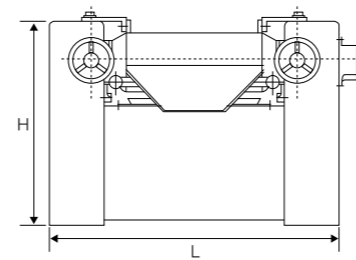
S150 三辊研磨机
S150 Three Rollers Grinder



S260 三辊研磨机
S260 Three Rollers Grinder



SM405 三辊研磨机
SM405 Three Rollers Grinder



●SG 系列三辊研磨机，整机采用优质钢板焊接，传动齿油浸式，操纵手轮采用齿传动，使该机具有外形美观、操作方便、延长使用寿命等特点，特别适合用于研磨，分散粘度高颗粒度要求细的产品。

●SG series machine of three rollers grinder this series is welded by high quality steel plate. The transmission gear adapts oil-immersed type and the operative handwheel is transmitted by gear. It features beautiful appearance, convenient to operate, long life and so on. Particularly it is suitable for grinding the product that has high dispersive viscosity and fine size.

应用范围：涂料、油墨、树脂、乳液、万能胶等粘度小于 5000CPS 的产品

Application scope: coating, ink, resin, emulsion, universal glue and other viscosity less than 5000CPS products



●专门针对频繁更换包装规格的需要而设计，具有双压盖功能。采用欧洲最新称重技术，西门子可编程微电脑控制器，自动放料速度调整、自动放料精度校正、紧急停止 / 断电 / 移罐三重保护。设定各种包装规格，储存三十余种包装规格数据，超差自动报警，自动压盖系统，并配备防爆装置。本设备应用于涂料、油墨、树脂、乳液、万能胶等粘度小于 5000CPS 的产品。

●Specially designed for the need of frequent replacement of packing specifications, it has double gland function. Using the latest European weighing technology, Siemens programmable microcomputer controller, automatic feeding speed adjustment, automatic feeding accuracy correction, emergency stop/power off/remove triple protection. Set various packing specifications, store over 30 kinds of packaging specification data, super differential automatic alarm, automatic gland system, and equipped with explosion-proof equipment. The equipment is applied to the products of coating, ink, resin, emulsion, universal glue and other viscosity less than 5000CPS.

技术参数 TECHNICAL PARAMETERS

型号 Type	S65/ST65	S150	S260	SM405	SM405 (加长Lengthen)	
辊筒直径 Roller diameter (mm)	65	150	260	405	405	
辊筒工作面长度 Length of roller working surface (mm)	130	300	675	810	1000	
出料口距地高度 Distance from discharg hole to ground (mm)	220	530	530	760	760	
辊筒转速 (r/min) Roll rotating speed	慢辊 Low speed roll	26	34	23	14	14
	中辊 Medium speed roll	70	78	64	42	42
	快辊 High speed roll	145	181	183	130	130
电机功率 Motor power (kw)	0.75	2.2	7.5	15	22	
辊筒转速比 Ratio of speed	1:2.3:5.5	1:2.3:5.38	1:2.85:8.13	1:3:9	1:3:9	
外形尺寸 Overall dimension LxWxH (mm)	440x400x450	830x830x930	1680x1320x1100	1950x1900x1450	2150x1900x1450	
整机重量 Machine weight (kg)	60	500	2100	5200	5800	
包装尺寸 Packing dimension LxWxH (mm)	500x500x530	1000x1000x1250	1800x1450x1400	2050x2000x1850	2250x2000x1850	

功能特色 FEATURES

- 专门针对频繁更换包装规格的需要而设计，具有双压盖功能；
- 采用欧洲最新称重技术；
- 采用西门子可编程微电脑控制器；
- 自动放料速度调整；
- 自动放料精度校正；
- 紧急停止 / 断电 / 移罐三重保护；
- 设定各种包装规格；
- 储存三十余种包装规格数据；
- 超差自动报警；
- 自动压盖系统；
- 配备防爆装置。
- Designed specifically for the need of frequent replacement of packaging specifications, with double gland function;
- Adopt the latest European weighing technology;
- Adopt Siemens programmable microcomputer controller;
- Adjust the feeding speed automatically;
- Automatic feeding accuracy correction;
- Emergency stop/power off/remove triple protection;
- Set various packing specifications;
- Storage of more than 30 kinds of packaging specifications;
- Super differential automatic alarm;
- Automatic lid system;
- Equipped with explosion-proof equipment.

技术参数 TECHNICAL PARAMETERS

称重范围 Weighing scale (kg)	1~30	包装桶规格 Cask size	≤ Φ300xH400
分度值 Dividing the value (g)	1、2、5	外形尺寸 Overall dimension (L 长 x W 宽 x H 高) (mm)	1600x800x1600
灌装精度 Filling accuracy	±0.2%	配套电源 Form a complete set of power supply	AC220V50HZ
灌装速度 Filling speed (min)	5~20	配套气源 Supporting air (mpa)	0.4



- DL 系列袋式过滤机是一种结构新颖体积小、操作简便灵活、高效、密闭工作、适应性强的多用途过滤设备，它广泛适用于化工、涂料、油墨、食品等行业。
- 该机有单过滤机、双联过滤机，并可配套输送泵组装在移动推车上。过滤机滤袋保护网均为不锈钢制作，其余部件有碳钢和不锈钢制作两种，供过滤不同介质的用户选择。
- Applicable for separating different thickness of dry and wet material, solid and liquid material in coating industry. Also powder and mucus.
- The mesh is easy to go through, easy changing, cleaning and operating. low noise and good reverse characteristics.



●SDF 多功能砂磨分散搅拌机 (频率控制) 是我公司设计的新产品。它集中砂磨、分散、搅拌功能，它是化学工业的实验室的理想选择。它采用了变频调速机，加热较低，没有碳刷的需要；变频器采用多回路换频率速度按钮，直接数字显示轴转速，很容易操作，它配备有砂磨片、分散搅拌叶片和叶片。它可以适应不同实验室的测试需要。

●SDF Versatile sand-milling dispersing-agitator (Frequency Control) is a new product designed by our company. It concentrates sand-milling, dispersion and agitation versatile equipments functions on this new products, it is ideal for chemical industry's laboratory. It adopts motor of frequency control, heating is lower, there is no need for carbon brush; Frequency converter adopts multiloop frequency-changer speed button, direct digits display axis revoution, it is easy to operate; it is equipped with sand-milling disc, dispersing blade and agitating blade. It can fit different testing need of laboratory.



技术参数 TECHNICAL PARAMETERS

规格 Type	DL-0.25	DL-0.5
电机功率 Motor power (kw)	3	3
过滤面积 Fitering area (m ²)	0.25	0.5
最高工作压力 Max.pressure (mpa)	0.6	0.6
最高工作温度 Max.temperature (°C)	120	120
进出口径 Inlet/outlet diameter (mm)	50	50
最高流速粘度 =1 厘泊 Max.speed Viscosity=centipoise (m ³ /h)	18	36
公称过滤精度 Specified finess (μm)	1, 2, 5, 10, 15, 25, 40, 50, 65, 75, 80, 100,1200	

技术参数 TECHNICAL PARAMETERS

规格 Type	SDF-04A	SDF-04B	SDF-75	SDF-220
功率 Power (kw)	0.4	0.4	0.75	2.2
容积 Container capacity (L)	2	2	3	20-50
研磨介质 Grinding media (mm)	玻璃珠或氧化铝珠			
升降高度 Elevating height (mm)	200	200	260	400-500
转速 Speed (r/min)	0-8000(电子调速)	0-8000(变频调速)	0-2800(变频调速)	0-2830(变频调速)
重量 Weight (kg)	40	40	80	150
外形尺寸 Overall dimension (mm)	450x450x900	450x450x900	450x550x930	600x720x1600

Z80 氧化锆珠
Z80 Zirconia balls

- 圆整度好、表面光滑、光亮、无气孔；
- 高强度、高韧性、耐冲击、不破碎；
- 稳定性佳，耐酸、碱；
- 低磨性，对设备的磨损极小，有较高的性价比。

- Smooth surface, bright, high density, good strength, hard;
- Good stability, strong acid and alkali resistance;
- Excellent toughness, high compressive strength, impact resistance, no breakage;
- Low abrasion, minimal wear on the equipment, commercial grinding grinding medium.



技术参数 TECHNICAL PARAMETERS

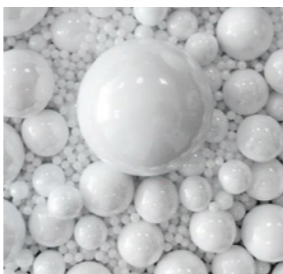
化学成份和含量 Chemical composition & Content				密度 Density	堆积密度 Bulk density	压碎强度 Compressive strength	维氏硬度 Vickers hardness	自磨耗 Self consumption	颜色 Color
ZrO ₂	Al ₂ O ₃	SiO ₂	其它 Other						
75~80%	5~10%	7~12%	1.00%	>5.4g/cm ³	≥ 3.3g/cm ³	>1.5KN (Φ2mm)	>1050	< 1ppm/h	White

Z95 钇稳定氧化锆珠

Z95 Ytria stabilized zirconia balls

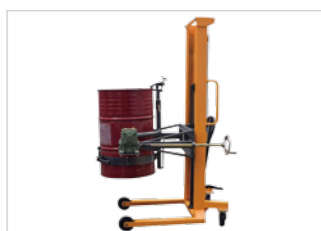
- 圆度好、表面光滑、光亮、密度高，强度高、坚硬；
- 稳定性佳，耐强酸、强碱；
- 有极好的韧性，抗压强度高，耐冲击、不破碎；
- 磨耗低，对设备的磨损极小，是最佳的研磨介质。

- Smooth surface, white bright, very high density, good strength, super hard;
- Good stability, strong acid and alkali resistance;
- Excellent toughness, high compressive strength, impact resistance, no breakage;
- Low abrasion, minimal wear on the equipment, is the best grinding medium.

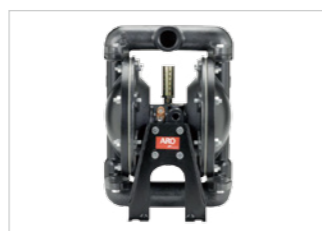


技术参数 TECHNICAL PARAMETERS

化学成份和含量 Chemical composition & Content		密度 Density	堆积密度 Bulk density	压碎强度 Compressive strength	维氏硬度 Vickers hardness	自磨耗 Self consumption	圆整度 Roundness	颜色 Color
ZrO ₂	Y ₂ O ₃							
94.8±0.2%	5.2±0.2%	>6.05g/cm ³	≥ 3.7g/cm ³	>2.0KN (Φ2mm)	>1200	<0.5ppm/h	≥ 0.98 (Xmin/Xmax)	White



液压倾倒车
Hydraulic dump truck



气动隔膜泵
Pneumatic diaphragm pump



齿轮泵
Gear pump



防爆防腐操作柱
Explosion-proof anti-corrosion operation column



防爆挠性管
Explosion-proof flexible pipe



分散盘
Dispersion plate

PARTIAL ENGINEERING CASES

部分工程案例



PARTIAL ENGINEERING CASES

部分工程案例





坐标机械

LEADMARK MACHINERY

Guangdong Leadmark Chemical Machinery Co., Ltd

Address: No. 12 of Nanyuan road, lunjiao town, shunde district, foshan city, guangdong province, China.

Phone: +86-757-2783-2137

Fax: +86-757-2783-0167

Mobile: +86-133-3643-1147

Mobile: +86-133-0256-8147

Mobile: +86-133-3644-8147

Email: yu@leadmark.cn / ke@leadmark.cn

Website: www.gdzbjx.com